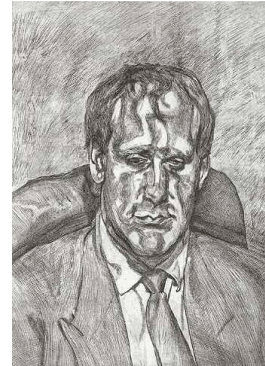


Expressive Questions/Frame – Portraits

Use these questions to help build your essay, but make sure you think up your own

You get most marks for having a personal opinion and backing it up with evidence from the painting or from books



- 1) This is a portrait painting of
- 2) They are sitting/standing.
- 3) You can see their whole body/half of their body/their head only/their head and shoulders.
 - i) They are sitting still/They look like they are in the middle of doing something.
- 4) Start to describe in detail what you see in the picture.
 - i) At the front of the picture, in the foreground, you can see
 - ii) In the background, you can see
 - iii) The part of the picture that draws my eye in most is
 - iv) The artist has used line/colour/shading/pattern/texture
- 5) The medium the artist has used is oil paint/pastel/watercolour paint/acrylic paint/pencil
- 6) The artist has used rough/smooth brushstrokes.
- 7) The painting seems to have depth/The painting seems to be flat.
- 8) You can see light and dark tones in the portrait [write in where they are]
- 9) The main colours used are
- 10) The colours in the painting go together so it has a harmonious colour scheme/
or The colours in the painting contrast with each other.
- 11) The artist has used hot/cold colours.
- 12) This portrait is realistic. If you were to meet the person you would recognize them. Or The way the portrait has been painted makes it difficult to tell who the person is.
- 13) I think the artist has made the person look more beautiful/more impressive than they actually were.

- 14) The portrait was painted in the year
- 15) The artist belonged to a movement called [ask if you don't know]
- 16) This portrait makes me feel happy/sad/confused/interested.....
- 17) I like the painting because...../I don't like this painting because.....
- 18) I think this is a successful portrait because....
- 19) It attracted my attention because.....
- 20) The artist could have improved the picture by