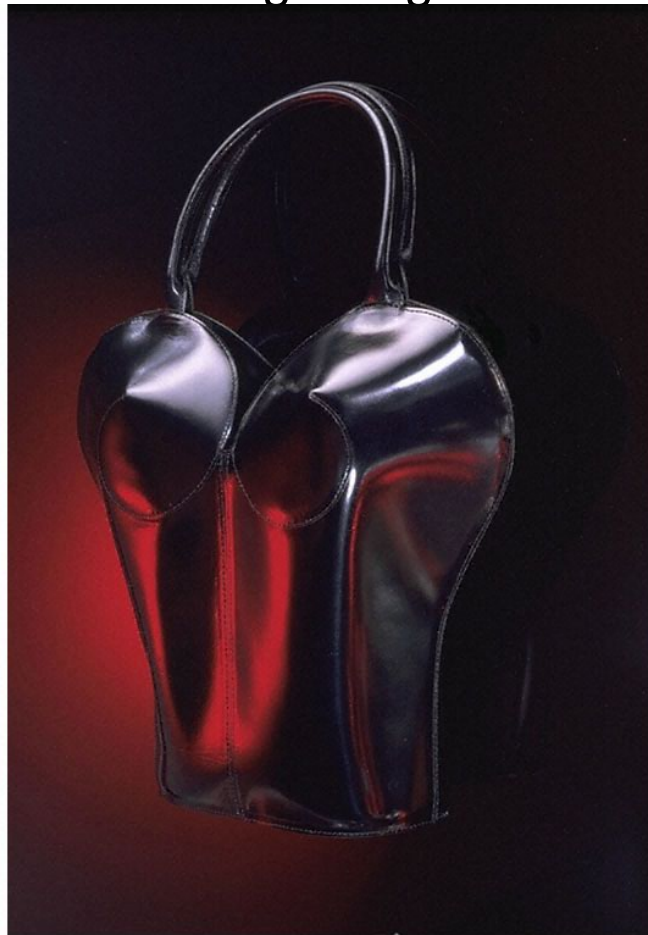


Bag design



*Issey Miyake
Handbag
1990s
Shaped leather*

In the early 1990s, small bags with designer logos swung all over London, New York and Paris, and only the trained eye could distinguish the real articles from the counterfeit. Stalwarts such as Jane Shilton continued to provide quality for many women with their affordable and well-made range of handbags. Shoe shops and boutique groups produced accessories that perfectly complemented their styles. Meanwhile, fashion designers featured more and more accessories at their catwalk shows, with hats, bags and shoes supplying the fizz, and the sale, for many collections. This black leather bust-shaped handbag by Issey Miyake plays on the idea of the femininity of the handbag--formed into a hollow torso it is subtle and disconcerting.

Black leather bust-shaped handbag