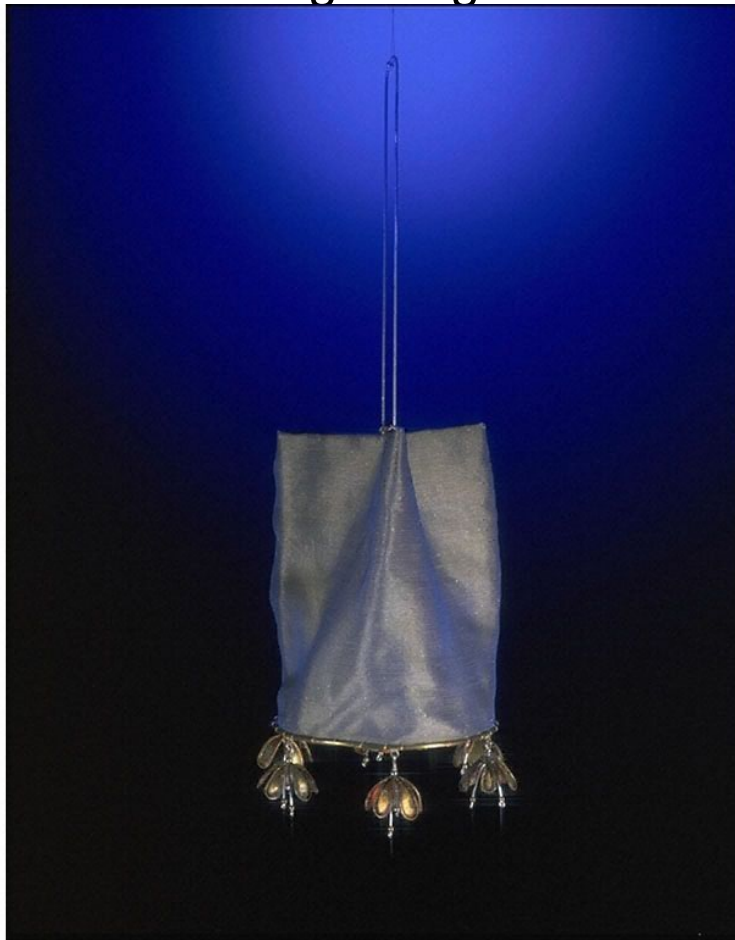


## Bag design



*Emily Jo Gibbs  
Handbag  
1998*

*Silk organza over dupion, decorated with copper and brass tassels; silver chain*

A group of British accessory makers emerged in the 1990s, in the long tradition of the artist-craftsman. These include Emily Jo Gibbs, who creates delicate purses and bags in metals and silks. Gibbs describes herself as 'a crafter because I design through making'. This drawstring purse is supported by a silver ring from which fuchsia-shaped metal tassels hang.

Silk organza drawstring purse with circular base, supported by a silver ring from which fuchsia-shaped copper and brass tassels hang